

**BBULL CANKON**  
Visual Can Inspection

# PRODUCT DESCRIPTION

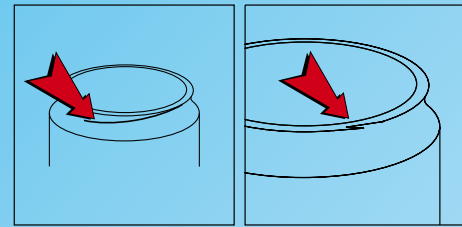
## Most Important System Features

- 100.000 cans per hour
- detects deformations in wall and rim areas, finds deposits in the can
- minimum space requirement
- inspects aluminium and steel cans
- inspects all sizes
- Easy operator control via TFT touch screen
- software based contact-free inspection, operating platform: Windows 2000
- remote maintenance and tele-diagnostics
- supports operation via line monitoring system network
- waterproofed ( IP-54)



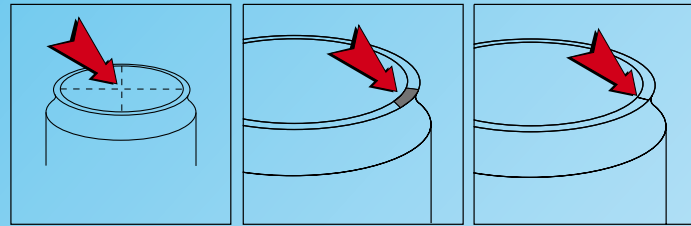
Control Unit

## List of detectable defect types:



Angel Hair

Chip Out



Ovality

Puckers

Splits

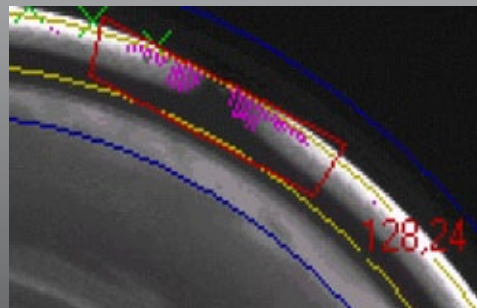
## SPEED AND FUNCTIONS

CANKON is designed to suit the inspection conditions at can filling plants. It can control up to 100.000 empty cans per hour. The system finds structural defects such as deformations at the wall and the rim as well as deposits within the can. A fast ejection unit reliably removes the defective containers from the line at full production speed.

## SAFETY

Mounted directly in front of the filling station, CANKON makes sure that only flaw-free cans enter this sensitive unit in which every deformed can might cause messy jams that result in lengthy production delays.

Furthermore CANKON improves your product safety by ensuring that no deposits are left in the cans.

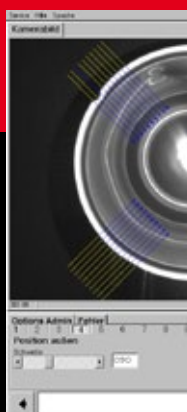


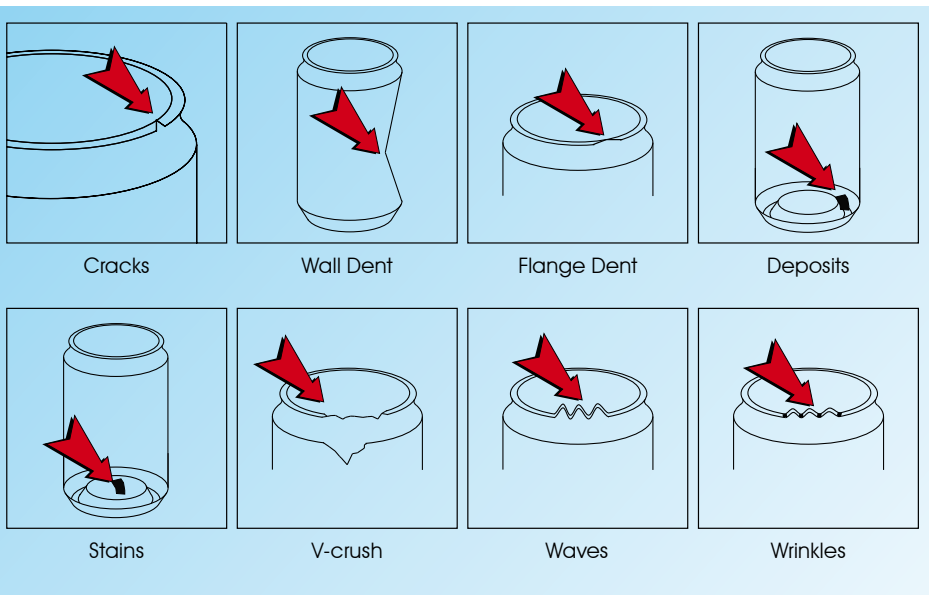
## Space Requirements

The little required mounting space plus its modular conception make the CANKON solution unique. Requiring only 200 mm of conveyor length, the system can be mounted in areas where other devices do not fit in. Thanks to the modular design, you can mount the separate modules (camera head, computer unit and rejector) at different spots and so reducing the required space at critical positions even more.



All necessary settings are built up step by step. Displays and images visualize all relevant information and provide the users with a direct feedback concerning their adjustments. Additional Illustrating images serve as examples and help finding the right setting.





## Pusher

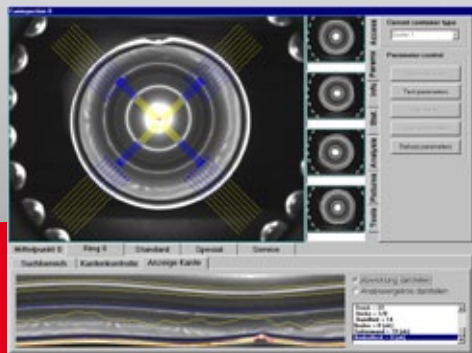
A high speed ejector unit makes sure that each and every defective or contaminated specimen is reliably removed from the production line even at maximum line speeds. Also successive defective samples are separated without any problem.



## SURVEILLANCE

You can connect **CANKON** to your line monitoring system via network to survey eject rates and the machine status from your control room. Due to the contact-free design of the system the set-up time is reduced to a minimum.

The operation of this software-based inspection solution is more than simple. Based on Microsofts Windows 2000 operation system the necessary parameters can easily be set locally aided by remote maintenance and tele-diagnostics via virtually any telephone network.



## SOLUTIONS

The high performance illumination concept relying on the latest LED-driven lighting fixtures on the market makes sure that **CANKON's** electronic eye, a high resolution CCD-chip, detects even the tiniest defects and deposits.

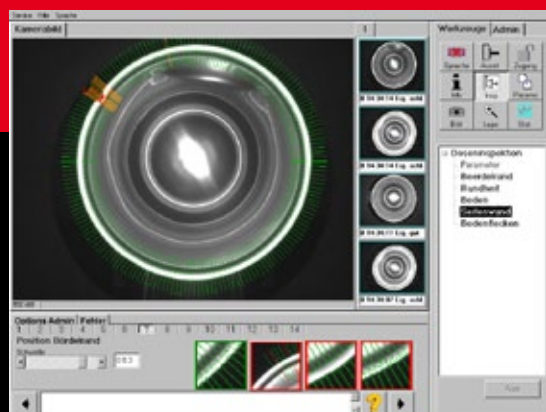
So **CANKON** reaches an optimum inspection performance.



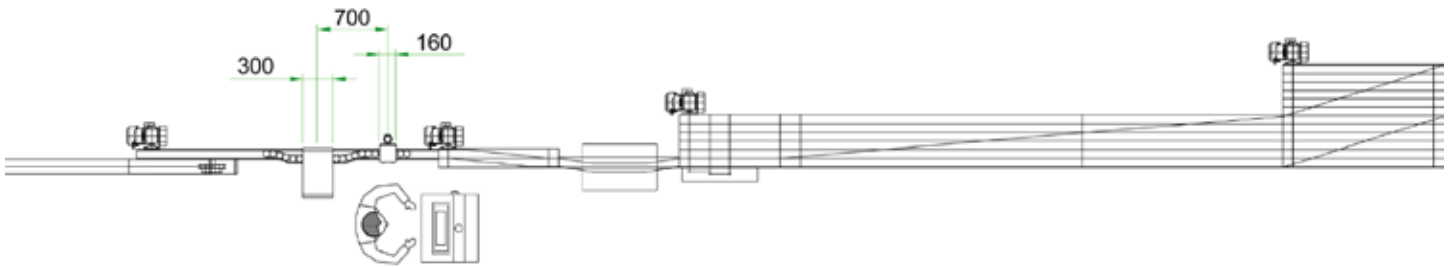
## Feedback

A self-explanatory colour code allows identifying defects at first sight. The program features drag bars to make the adjustment of the parameters easier. During operation you can access separate inspection steps and their parameters (diagnosis).

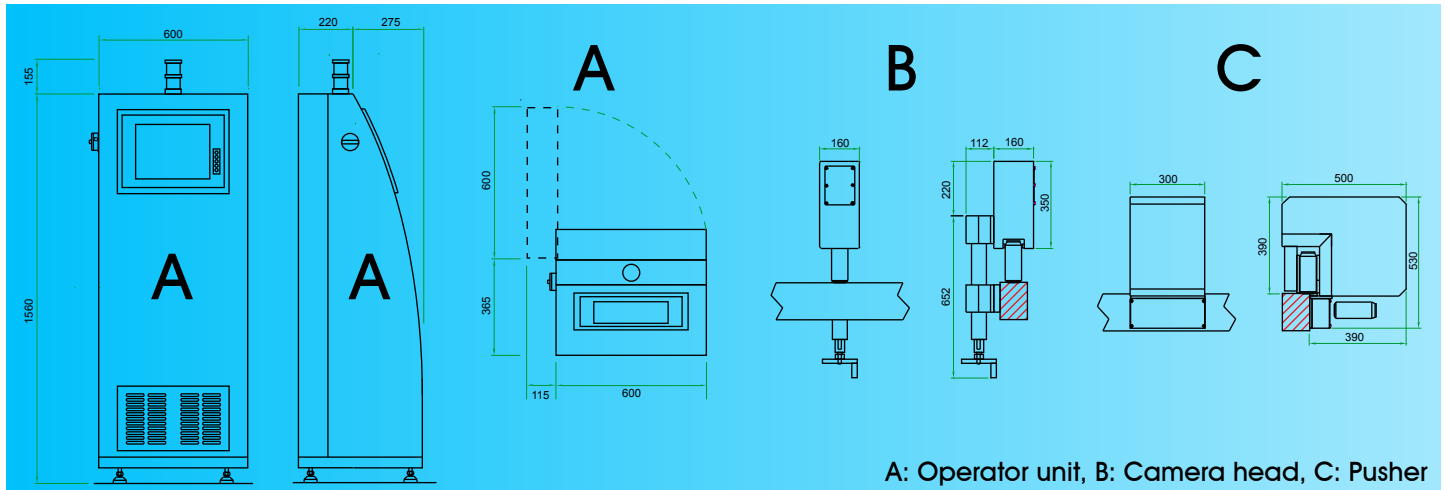
The program defines a fixed sequence of adjustment steps for new types. Help texts appear in the program to inform the user on which adjustment to carry out next and on how the result must look.



## Top Line View



## Sketch



STRATEC CONTROL-SYSTEMS GmbH • Ankerstrasse 73 • 75203 Königsbach-Stein  
 Telefon (+49) 72 32- 40 06- 0 • Telefax (+49) 72 32- 40 06- 25  
[www.bull.com](http://www.bull.com)